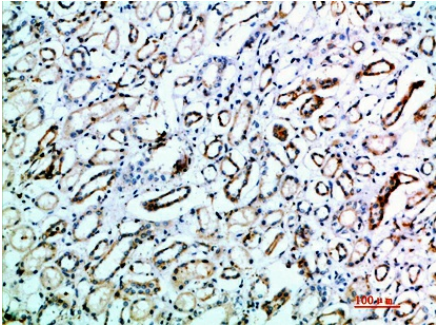


## CD231 Polyclonal Antibody

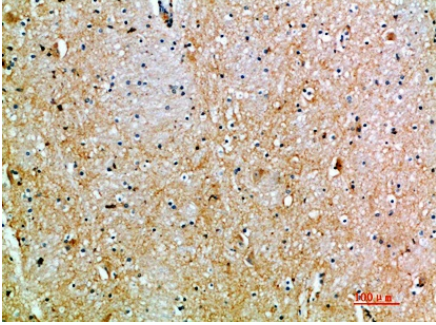
### Description

<b>Catalog No.:</b>	BTL5946T
<b>Applications:</b>	IHC-p,ELISA
<b>Reactivity:</b>	Human,Mouse,Rat
<b>Gene Name:</b>	TSPAN7 A15 DXS1692E MXS1 TM4SF2
<b>Protein Name:</b>	Tetraspanin-7 (Tspan-7) (Cell surface glycoprotein A15) (Membrane component chromosome X surface marker 1) (T-cell acute lymphoblastic leukemia-associated antigen 1) (TALLA-1) (Transmembrane 4 superfa
<b>Human Gene Id:</b>	7102
<b>Human Swiss Prot No:</b>	P41732
<b>Mouse Gene Id:</b>	21912
<b>Mouse Swiss Prot No:</b>	Q62283
<b>Immunogen:</b>	Synthetic peptide from human protein at AA range: 101-150
<b>Specificity:</b>	The antibody detects endogenous CD231
<b>Formulation:</b>	Liquid in PBS containing 50% glycerol, 0.5% BSA and 0.02% sodium azide.
<b>Source:</b>	Rabbit
<b>Dilution:</b>	IHC-p 1:50-200, ELISA 1:10000-20000
<b>Purification:</b>	The antibody was affinity-purified from rabbit antiserum by affinity-chromatography using epitope-specific immunogen.
<b>Concentration:</b>	1 mg/ml
<b>Storage Stability:</b>	-20°C/1 year
<b>Other Name:</b>	Tetraspanin-7 (Tspan-7) (Cell surface glycoprotein A15) (Membrane component chromosome X surface marker 1) (T-cell acute lymphoblastic leukemia-associated antigen 1) (TALLA-1) (Transmembrane 4 superfa
<b>Background:</b>	The protein encoded by TSPAN7 is a member of the transmembrane 4 superfamily, also known as the tetraspanin family. Most of these members are cell-surface proteins that are characterized by the presen
<b>Function:</b>	protein amino acid glycosylation, protein amino acid N-linked glycosylation, glycoprotein metabolic

### Products Images



Immunohistochemical analysis of paraffin-embedded human-kidney, antibody was diluted at 1:200



Immunohistochemical analysis of paraffin-embedded human-brain, antibody was diluted at 1:200

## References

---